

CLT/CLB CONTAINER LIFTING LUGS

** Always read operating instructions prior to use.*

CLT for top lifting CLB for side lifting

Working load limit* (WLL) 32000 - 56000kg

These container lifting lugs are supplied, and used, in sets of 4 and have a total lifting capacity of up to 56 tonne. The CLT and CLB lugs serve as flexible lashing points for the transportation of containers.

Two types are available dependant on if you want to fasten them to the top or the side of the container.

The CLT type is vertically mounted in the hole at the top of the container and is locked into place by simply turning the lug 90°. This configuration allows for transportation via the use of a lifting frame in conjunction with cables, chains or slings.

The CLB model is mounted horizontally to the side of the container at either the top or the bottom fixing holes. This model has a spring loaded bolt to prevent accidental release.

NB. NOT TO BE USED ON A 4 LEG CHAIN SLING.



CLT
for top lifting



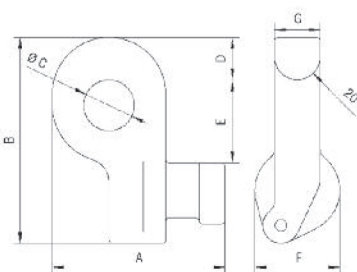
CLB
for side lifting

Model	WLL kg*	Type of lifting	Sling angle from vertical	A mm	B mm	C mm	D mm	E mm	F mm	G mm	Weight kg*
CLB	32000 40000 50000	SIDE	50° 36° Vertical	152	181	45	37	73	75	40	18
CLT	56000	TOP	Vertical	123	217	45	39	57	101	121	28

***Per set of 4.**



**Container lifting lug
CLB**



**Container lifting lug
CLT**

