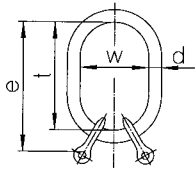


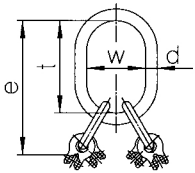
## 2 Special Clevis Sub-Assembly GTKR/SUN



For 2-leg slings.

Chain Ø		Code	Can be used to single hook acc. to DIN15401 no.	Dimensions				Weight	Working Load Limit B	
mm	inch			d	t	w	e		up to 45°	45°-60°
7	9/32	GTKR/SUN 2-7	6	19	160	95	203	1.50	3,350	2,360
8	5/16	GTKR/SUN 2-8	6	19	160	95	203	1.52	4,250	3,000
10	3/8	GTKR/SUN 2-10	10	23	170	105	221	2.67	7,100	5,000
13	1/2	GTKR/SUN 2-13	10	30	190	110	257	5.00	11,200	8,000
16	5/8	GTKR/SUN 2-16	12	38	275	150	353	10.37	17,000	12,200

## 4 Special Clevis Sub-Assembly GTKR/SUN

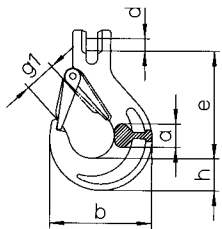


For 3 and 4-leg slings.

Chain Ø		Code	Can be used to single hook acc. to DIN15401 no.	Dimensions				Weight	Working Load Limit B	
mm	inch			d	t	w	e		up to 45°	45°-60°
7	9/32	GTKR/SUN 4-7	10	27	190	110	287	4.11	5,000	3,550
8	5/16	GTKR/SUN 4-8	10	27	190	110	287	4.15	6,300	4,500
10	3/8	GTKR/SUN 4-10	12	30	190	110	326	6.62	10,600	7,500
13	1/2	GTKR/SUN 4-13	12	38	275	150	479	14.27	17,000	11,800
16	5/8	GTKR/SUN 4-16	12	38	275	150	503	21.25	25,600	18,300

## Sling Hooks

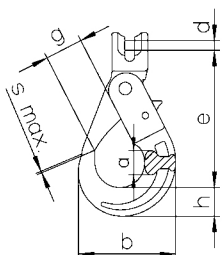
### Clevis Sling Hook with Forged Safety Latch HKS/SUN



General purpose hook.

Chain		Code	Dimensions						Weight	Working Load Limit
mm	inch		e	h	a	b	d	g1		
7	9/32	HKS/SUN 7	93	27	21	89	9,5	26	0.67	2,360
8	5/16	HKS/SUN 8	92	27	21	89	11	26	0.67	3,000
10	3/8	HKS/SUN 10	108	33	25	110	14	31	1.23	5,000
13	1/2	HKS/SUN 13	130	41	34	132	17,5	38	2.42	8,000
16	5/8	HKS/SUN 16	158	49	37	160	21	45	4.22	12,200

### Clevis Self Locking Hook HKSB/SUN



Closes and locks automatically.

Chain		Code	Dimensions							Weight	Working Load Limit
mm	inch		e	h	a	b	d	g	s max.		
7	9/32	HKSB/SUN 7	125	26	21	92	9,5	32	1	0.94	2,360
8	5/16	HKSB/SUN 8	124	26	21	92	11	32	1	0.95	3,000
10	3/8	HKSB/SUN 10	143	31	26	115	14	45	1	1.91	5,000
13	1/2	HKSB/SUN 13	183	42	35	145	17,5	54	2	3.66	8,000
16	5/8	HKSB/SUN 16	218	51	41	169	21	60	2	6.80	12,200